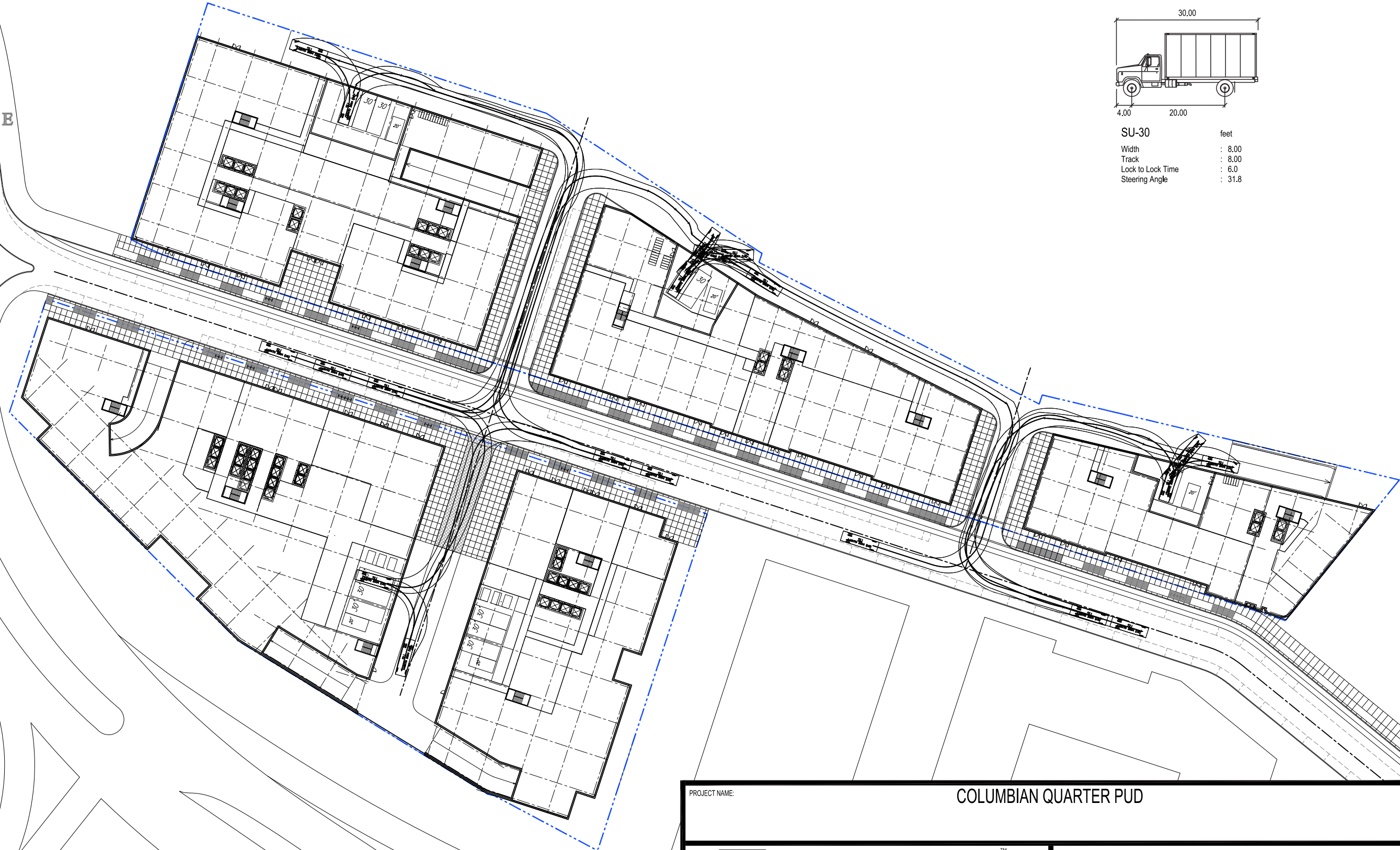



SU-30 feet
Width : 8.00
Track : 8.00
Lock to Lock Time : 6.0
Steering Angle : 31.8



PROJECT NAME:		COLUMBIAN QUARTER PUD	
 BOHLER DC		SHEET TITLE: TRUCK TURN SHEET C7	
1331 PENNSYLVANIA AVE., NW, STE. 1250 WASHINGTON, DC 20004 PHONE: (202) 524-5700		SCALE: --	DATE: 10/04/17
		CAD ID:	PROJECT NUMBER: ZOSING COMMS 5209

NOTES:

1. PROPERTY IS KNOWN AS A&T LOT 951 IN SQUARE 5861 AS RECORDED IN LIBER LEVY COURT 2, FOLIO 1 AMONG THE OFFICE OF THE SURVEYOR IN THE DISTRICT OF COLUMBIA AND BEING THE LANDS OF 631 HOWARD ROAD, LLC, AS RECORDED IN DOCUMENT NUMBER 2013119117, LOT 86 IN SQUARE 5861 AS RECORDED IN LIBER 148, FOLIO 63 AMONG THE OFFICE OF THE SURVEYOR IN THE DISTRICT OF COLUMBIA AND BEING THE LANDS OF 633 HOWARD ROAD, LLC, AS RECORDED IN DOCUMENT NUMBER 2013119220, LOT 85 IN SQUARE 5861 AS RECORDED IN LIBER 148, FOLIO 63 AMONG THE OFFICE OF THE SURVEYOR IN THE DISTRICT OF COLUMBIA AND BEING THE LANDS OF 701 HOWARD ROAD, LLC, AS RECORDED IN DOCUMENT NUMBER 2013119219, A&T LOT 957 IN SQUARE 5861 AS RECORDED IN LIBER 118, FOLIO 73 AMONG THE OFFICE OF THE SURVEYOR IN THE DISTRICT OF COLUMBIA AND BEING THE LANDS OF 715 HOWARD ROAD, LLC, AS RECORDED IN DOCUMENT NUMBER 2013119222, LOT 79 IN SQUARE 5861 AS RECORDED IN LIBER 118, FOLIO 73 AMONG THE OFFICE OF THE SURVEYOR IN THE DISTRICT OF COLUMBIA AND BEING THE LANDS OF 731 HOWARD ROAD, LLC, AS RECORDED IN DOCUMENT NUMBER 2013119221, LOTS 82, 83 AND 84 IN SQUARE 5861 AS RECORDED IN LIBER 118, FOLIO 179 AMONG THE OFFICE OF THE SURVEYOR IN THE DISTRICT OF COLUMBIA AND BEING THE LANDS OF POLAR POINT EAST, LLC, AS RECORDED IN INSTRUMENT NUMBER 2007136173, A&T LOT 937 IN SQUARE 5860 AS RECORDED IN LIBER LEVY COURT 2 FOLIO 1 AMONG THE OFFICE OF THE SURVEYOR IN THE DISTRICT OF COLUMBIA AND BEING THE LANDS OF WILBUR L. GRAY AND FRANCIS W. HILL, JR., AS RECORDED IN LIBER 214 FOLIO 10253, A&T LOT 982 IN SQUARE 5860 AS RECORDED IN LIBER LEVY COURT 2, FOLIO 1 AMONG THE OFFICE OF THE SURVEYOR IN THE DISTRICT OF COLUMBIA AND BEING THE LANDS OF 632 HOWARD ROAD LLC, AS RECORDED IN DOCUMENT NUMBER 2014056915, A&T LOT 971 IN SQUARE 5860 AS RECORDED IN LIBER LEVY COURT 2 FOLIO 1 AMONG THE OFFICE OF THE SURVEYOR IN THE DISTRICT OF COLUMBIA AND BEING THE LANDS OF THE UNITED STATES OF AMERICA, AS RECORDED IN DOCUMENT NUMBER 2014056915, A&T LOT 986 IN SQUARE 5860 AS RECORDED IN LIBER LEVY COURT 2 FOLIO 1 AMONG THE OFFICE OF THE SURVEYOR IN THE DISTRICT OF COLUMBIA AND BEING THE LANDS OF 700 HOWARD ROAD, LLC, AS RECORDED IN DOCUMENT NUMBER 2013119113, A&T LOT 969 IN SQUARE 5860 AS RECORDED IN LIBER LEVY COURT 2 FOLIO 1 AMONG THE OFFICE OF THE SURVEYOR IN THE DISTRICT OF COLUMBIA AND BEING THE LANDS OF UNITED STATES OF AMERICA, A&T LOT 988 IN SQUARE 5860 AS RECORDED IN LIBER LEVY COURT 2 FOLIO 1 AMONG THE OFFICE OF THE SURVEYOR IN THE DISTRICT OF COLUMBIA AND BEING THE LANDS OF 730 HOWARD ROAD, LLC, AS RECORDED IN DOCUMENT NUMBER 2013119113, A&T LOT 951 IN SQUARE 5860 AS RECORDED IN LIBER LEVY COURT 2 FOLIO 1 AMONG THE OFFICE OF THE SURVEYOR IN THE DISTRICT OF COLUMBIA AND BEING THE LANDS OF 9 HOWARD ROAD, LLC, AS RECORDED IN DOCUMENT NUMBER 2013119114, A&T LOT 1020 IN SQUARE 5860 AS RECORDED IN LIBER LEVY COURT 2 FOLIO 1 AMONG THE OFFICE OF THE SURVEYOR IN THE DISTRICT OF COLUMBIA AND BEING THE LANDS OF THE EARTH CONSERVATION CORPS, AS RECORDED IN DOCUMENT NUMBER 2000024085, A&T LOT 1030 IN SQUARE 5860 AS RECORDED IN LIBER 104 FOLIO 165 AMONG THE OFFICE OF THE SURVEYOR IN THE DISTRICT OF COLUMBIA AND BEING THE LANDS OF THE EARTH CONSERVATION CORPS, AS RECORDED IN DOCUMENT NUMBER 2000024084, A&T LOT 1029 IN SQUARE 5860 AS RECORDED IN LIBER 104 FOLIO 165 AMONG THE OFFICE OF THE SURVEYOR IN THE DISTRICT OF COLUMBIA AND BEING THE LANDS OF 152 HOWARD ROAD, LLC, AS RECORDED IN DOCUMENT NUMBER 2014052710, A&T LOTS 1028 AND 1027 IN SQUARE 5860 AS RECORDED IN LIBER 104 FOLIO 165 AMONG THE OFFICE OF THE SURVEYOR IN THE DISTRICT OF COLUMBIA AND BEING THE LANDS OF 822 HOWARD ROAD LLC, AS RECORDED IN DOCUMENT NUMBER 2014075519, AND A&T LOTS 1036 AND 1037 IN SQUARE 5860 AS RECORDED IN SUBDIVISION BOOK 8 PAGE 84 AMONG THE OFFICE OF THE SURVEYOR IN THE DISTRICT OF COLUMBIA AND BEING THE LANDS OF 822 HOWARD ROAD LLC, AS RECORDED IN DOCUMENT NUMBER 2014075519, ALL RECORDED AMONG THE OFFICE OF THE RECORDED OF DEEDS FOR THE DISTRICT OF COLUMBIA.

2. AREA: LOT 79 = 31,854 SQUARE FEET OR 0.731 ACRES
 LOT 86 = 17,032 SQUARE FEET OR 0.391 ACRES
 LOT 85 = 28,612 SQUARE FEET OR 0.657 ACRES
 LOTS 82, 83 & 84 = 7,416 SQUARE FEET OR 0.170 ACRES
 A&T LOT 957 = 40,473 SQUARE FEET OR 0.920 ACRES
 A&T LOT 951 = 10,941 SQUARE FEET OR 0.251 ACRES
 A&T LOT 957 = 31,686 SQUARE FEET OR 0.727 ACRES
 A&T LOT 969 = 5,820 SQUARE FEET OR 0.134 ACRES
 A&T LOT 971 = 13,101 SQUARE FEET OR 0.301 ACRES
 A&T LOT 982 = 25,626 SQUARE FEET OR 0.588 ACRES
 A&T LOT 986 = 31,703 SQUARE FEET OR 0.728 ACRES
 A&T LOT 988 = 17,652 SQUARE FEET OR 0.405 ACRES
 A&T LOT 1020 = 17,147 SQUARE FEET OR 0.394 ACRES
 A&T LOT 1025 = 3,426 SQUARE FEET OR 0.079 ACRES
 A&T LOT 1026 = 3,496 SQUARE FEET OR 0.080 ACRES
 A&T LOT 1027 = 3,665 SQUARE FEET OR 0.084 ACRES
 A&T LOT 1028 = 3,833 SQUARE FEET OR 0.088 ACRES
 A&T LOT 1029 = 4,001 SQUARE FEET OR 0.092 ACRES
 A&T LOT 1030 = 4,170 SQUARE FEET OR 0.096 ACRES
 A&T LOT 1031 = 4,404 SQUARE FEET OR 0.101 ACRES

3. LOCATION OF ALL UNDERGROUND UTILITIES ARE APPROXIMATE. SOURCE INFORMATION FROM PLANS REFERENCED HEREON AND MARKINGS HAS BEEN COMBINED WITH OBSERVED EVIDENCE OF UTILITIES TO DEVELOP A VIEW OF THOSE UNDERGROUND UTILITIES. HOWEVER, LACKING EXCAVATION, THE EXACT LOCATION OF UNDERGROUND UTILITIES CANNOT BE ACCURATELY, COMPLETELY AND RELIABLY DEPICTED, WHERE ADDITIONAL OR MORE DETAILED INFORMATION IS REQUIRED, THE CLIENT IS ADVISED THAT EXCAVATION MAY BE NECESSARY.

APPROXIMATE LOCATION OF UNDERGROUND UTILITIES ARE SHOWN PER PRIVATE UTILITY MARK OUT PERFORMED BY INSIGHT ON APRIL 26, 2016 AND FIELD LOCATED WITH CONVENTIONAL FIELD SURVEY UNLESS OTHERWISE NOTED.

4. THIS FIELD SURVEY WAS PERFORMED UTILIZING THE REFERENCE MATERIAL AS LISTED HEREON AND DEPICTS BUILDINGS, STRUCTURES AND OTHER IMPROVEMENTS THEREON, ON APRIL 27, 2016, BY BOHLER ENGINEERING.

5. THESE PROPERTIES MAY BE SUBJECT TO RESTRICTIONS, COVENANTS AND/OR EASEMENTS, WRITTEN OR IMPLIED. THIS SURVEY WAS PREPARED WITHOUT THE BENEFIT OF A TITLE REPORT.

6. THE EXISTENCE OF UNDERGROUND STORAGE TANKS, IF ANY, WAS NOT KNOWN AT THE TIME OF THE FIELD SURVEY; HOWEVER, NO PHYSICAL INDICATIONS OF SUCH WERE FOUND AT THE TIME OF THE FIELD INSPECTION OF THIS SITE.

7. ELEVATIONS ARE BASED ON DCDPW DATUM, DISTRICT OF COLUMBIA BENCHMARK NO. 13-20 WITH A PUBLISHED ELEVATION OF 17.10 FEET.

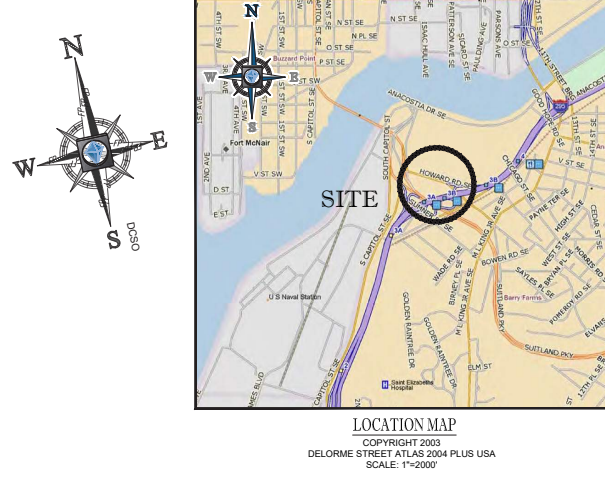
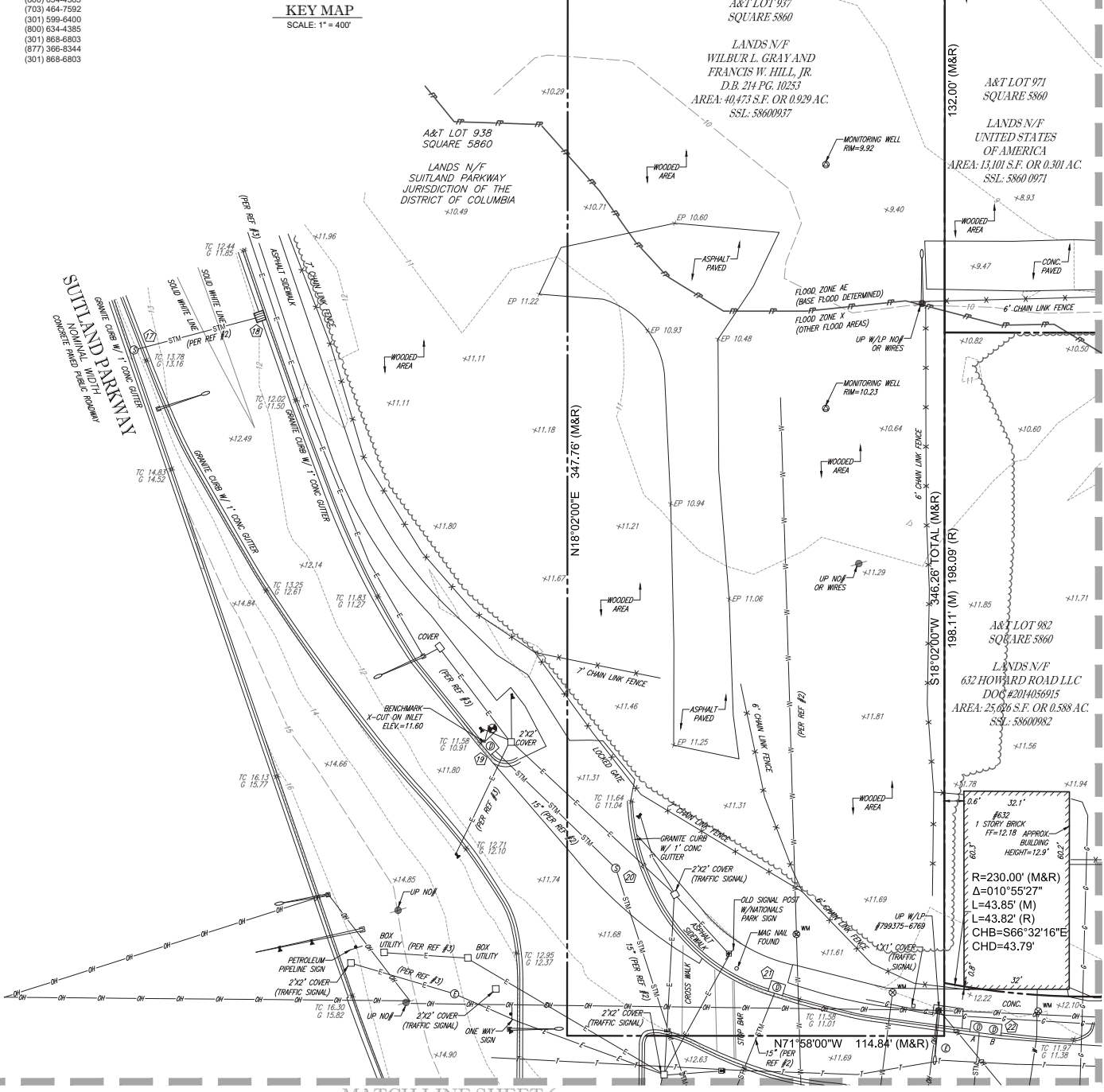
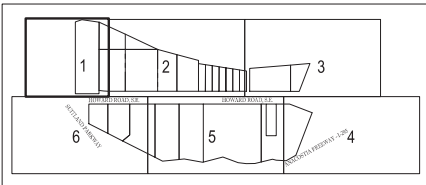
8. PART OF THE AREA IS LOCATED IN OTHER FLOOD AREAS, ZONE X (AREAS OF 0.2% ANNUAL CHANCE FLOOD, AREAS WITH ANNUAL CHANCE FLOOD WITH AVERAGE DEPTHS OF LESS THAN 1 FOOT OR WITH DRAINAGE AREAS LESS THAN 1 SQUARE MILE, AND AREAS PROTECTED BY LEVEES FROM 1% ANNUAL CHANCE FLOOD) AND PART OF THE AREA IS LOCATED IN OTHER AREAS ZONE X (AREAS DETERMINED TO BE OUTSIDE THE ANNUAL 0.2% CHANCE FLOODPLAIN) AND PART OF THE AREA IS LOCATED IN ZONE AE (AREAS WHERE FLOOD ELEVATIONS HAVE BEEN DETERMINED) PER MAPS ENTITLED "FIRM, FLOOD INSURANCE RATE MAP, DISTRICT OF COLUMBIA, WASHINGTON D.C., PANEL 76 OF 100, COMMUNITY-PANEL NUMBER 1100010076C, WITH A MAP EFFECTIVE DATE OF SEPTEMBER 27, 2010 AND PANEL 57 OF 100, COMMUNITY-PANEL NUMBER 1100010057C, WITH A MAP EFFECTIVE DATE OF SEPTEMBER 27, 2010.

9. BOUNDARY INFORMATION SHOWN HEREON WAS OBTAINED FROM OFFICIAL CITY RECORDS, AND VERIFIED IN THE FIELD INsofar AS POSSIBLE. PROPERTY LINE DIMENSIONS FROM OFFICIAL RECORDS MAY NOT NECESSARILY AGREE WITH THE ACTUAL MEASURED DIMENSIONS. ALL PROPERTY LINES IN THE DISTRICT OF COLUMBIA ARE SUBJECT TO REVIEW AND APPROVAL BY THE OFFICE OF THE SURVEYOR, DISTRICT OF COLUMBIA. A "SURVEY TO MARK" PREPARED BY THE SURVEYOR IS REQUIRED TO ESTABLISH A FINAL BOUNDARY DETERMINATION AND CONFIRMATION FOR THIS PROPERTY. THIS SURVEY DOES NOT REFLECT A "SURVEY TO MARK". THE PROPERTY LINE REFLECTED ON THIS SURVEY IS NOT TO BE USED FOR ANY CONSTRUCTION STAKEOUT PURPOSES. A "SURVEY TO MARK" MUST BE APPROVED BY THE OFFICE OF THE SURVEYOR PRIOR TO BEGINNING ANY BUILDING DEMOLITION OR CONSTRUCTION OPERATIONS.

UTILITIES:
 THE FOLLOWING COMPANIES WERE NOTIFIED BY DELMARVA MISS UTILITY SYSTEM (1-800-257-7777) AND REQUESTED TO MARK OUT UNDERGROUND FACILITIES AFFECTING AND SERVICING THIS SITE. THE UNDERGROUND UTILITY INFORMATION SHOWN HEREON IS BASED UPON THE UTILITY COMPANIES RESPONSE TO THIS REQUEST.
 15662456, 16233563, 16233615, 16233626, 16233642, 16233645, 16233649, 16233654 & 16233663:

UTILITY COMPANY
 WASHINGTON GAS-UTLILQUEST
 COMCAST OF DC
 DC DOT/INSIGHT LLC
 MCI
 PEPCOD/DCI UTILITY LOCATION
 OVEST GOVERNMENT SERVICES
 NUSTAR
 VERIZON
 DC WTR & SWRP/INPOINT UG
 LEVEL3 COMMUNICATION
 WSSC - PINPOINT UG

PHONE NUMBER
 (301) 210-0355
 (804) 562-3409
 (703) 378-9008
 (800) 289-3427
 (800) 634-4385
 (703) 484-7592
 (301) 599-6400
 (800) 634-4385
 (301) 888-6803
 (877) 366-5344
 (301) 868-6803

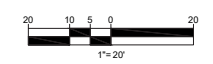


SANITARY & STORM STRUCTURE TABLE							
NO.	TYPE	RIM ELEV (A)	RIM ELEV (B)	INV (A)	INV (C)	INV (D)	INV (E)
1	CURB INLET	9.59	N/A	*	N/A	N/A	N/A
2	CURB INLET	9.55	N/A	*	N/A	N/A	N/A
3	MANHOLE	8.59	N/A	*	*	*	N/A
4	MANHOLE	9.74	N/A	*	*	*	N/A
5	MANHOLE	10.69	N/A	*	*	*	N/A
6	CURB INLET	10.68	N/A	6.2	N/A	N/A	N/A
7	MANHOLE	12.78	N/A	*	*	N/A	N/A
8	CURB INLET	14.28	N/A	*	*	N/A	N/A
9	MANHOLE	13.84	N/A	*	*	N/A	N/A
10	MANHOLE	12.50	N/A	*	*	N/A	N/A
11	GRATE INLET	11.39	N/A	*	N/A	N/A	N/A
12	MANHOLE	11.93	N/A	*	*	N/A	N/A
13	MANHOLE	12.26	N/A	*	*	*	*
14	MANHOLE	12.15	N/A	*	*	N/A	N/A
15	MANHOLE	13.25	N/A	*	*	N/A	N/A
16	MANHOLE	13.32	N/A	*	*	N/A	N/A
17	MANHOLE	14.20	N/A	*	*	N/A	N/A
18	GRATE INLET	11.92	N/A	*	N/A	N/A	N/A
19	CURB INLET	11.54	N/A	*	N/A	N/A	N/A
20	MANHOLE	11.18	N/A	*	*	N/A	N/A
21	CURB INLET	11.58	N/A	*	N/A	N/A	N/A
22	CURB INLET	11.73	11.7	*	N/A	N/A	N/A
23	MANHOLE	11.66	N/A	*	*	*	*
24	CURB INLET	11.93	11.87	*	N/A	N/A	N/A
25	MANHOLE	11.80	N/A	*	*	N/A	N/A
26	GRATE INLET	11.04	N/A	*	N/A	N/A	N/A
27	GRATE INLET	11.07	N/A	*	*	N/A	N/A
28	MANHOLE	12.98	N/A	*	*	N/A	N/A
29	CURB INLET	12.11	N/A	*	N/A	N/A	N/A
30	MANHOLE	11.94	N/A	*	*	*	N/A
31	CURB INLET	12.02	12.07	*	N/A	N/A	N/A
32	GRATE INLET	12.34	N/A	*	N/A	N/A	N/A
33	CURB INLET	12.58	12.63	*	N/A	N/A	N/A
34	MANHOLE	12.20	N/A	*	*	*	N/A
35	CURB INLET	12.48	12.54	*	N/A	N/A	N/A
36	MANHOLE	12.39	N/A	*	N/A	N/A	N/A
37	CURB INLET	13.48	13.59	*	N/A	N/A	N/A
38	MANHOLE	13.23	N/A	*	*	*	N/A
39	MANHOLE	13.06	N/A	*	*	N/A	N/A
40	CURB INLET	13.48	13.48	*	N/A	N/A	N/A
41	MANHOLE	13.77	N/A	*	*	N/A	N/A
42	MANHOLE	13.69	N/A	*	*	N/A	N/A
43	MANHOLE	14.85	N/A	*	N/A	N/A	N/A
44	CURB INLET	15.36	15.43	*	N/A	N/A	N/A
45	MANHOLE	15.00	N/A	*	*	*	N/A
46	MANHOLE	15.12	N/A	*	*	N/A	N/A
47	CURB INLET	15.54	15.52	*	N/A	N/A	N/A
48	MANHOLE	16.07	N/A	*	*	N/A	N/A
49	MANHOLE	16.03	N/A	*	*	N/A	N/A
50	CURB INLET	17.02	17.09	*	N/A	N/A	N/A
51	MANHOLE	17.30	N/A	*	*	N/A	N/A
52	MANHOLE	16.99	N/A	*	*	N/A	N/A
53	MANHOLE	18.64	N/A	*	*	*	N/A
54	MANHOLE	18.68	N/A	*	*	N/A	N/A
55	CURB INLET	19.18	19.25	*	N/A	N/A	N/A
56	MANHOLE	19.26	N/A	*	*	N/A	N/A
57	CURB INLET	19.83	N/A	*	N/A	N/A	N/A
58	MANHOLE	20.60	N/A	*	*	*	N/A
59	CURB INLET	20.82	N/A	*	N/A	N/A	N/A
60	MANHOLE	20.98	N/A	*	*	N/A	N/A

* = NO ACCESS AT THE TIME OF THIS SURVEY

LEGEND	
	OVERHEAD WIRES
	APPROX. LOC. UNDERGROUND GAS LINE PER UTILITY MARKOUT
	APPROX. LOC. UNDERGROUND WATER LINE PER UTILITY MARKOUT
	APPROX. LOC. UNDERGROUND TEL. LINE PER UTILITY MARKOUT
	APPROX. LOC. UNDERGROUND ELEC. LINE PER UTILITY MARKOUT
	APPROX. LOC. UNDERGROUND WATER LINE PER REF. #1
	APPROX. LOC. UNDERGROUND ELEC. LINE PER REF. #1
	APPROX. LOC. UNDERGROUND SEWER LINE PER REF. #2 & 3
	APPROX. LOC. UNDERGROUND STORM LINE PER REF. #2 & 3
	APPROX. LOC. FLOOD PLAN
	EXISTING CONTOUR
	EXISTING SPOT ELEVATION
	EXIST. TOP OF CURB ELEVATION
	EXIST. GUTTER ELEVATION
	UTILITY POLE
	TRAFFIC SIGNAL
	MONITORING WELL
	ELECTRIC METER
	ELECTRIC BOX
	SANITARY MANHOLE
	TELEPHONE MANHOLE
	ELECTRIC MANHOLE
	WATER MANHOLE
	STORM DRAIN MANHOLE
	WATER METER
	GAS METER
	SIGN
	CLEAN OUT
	HYDRANT
	WATER VALVE
	GAS VALVE
	BOLLARD
	U-BOLLARD
	METAL GUARDRAIL
	BENCHMARK
	FENCE
	LANDSCAPED AREA
	BORING LOCATION
	AREA LIGHT
	PAINTED ARROWS
	STORM & SANITARY STRUCTURE ID NUMBER
	UTILITY POLE/LIGHT POLE
	GUY WIRE
	TRAFFIC SIGNAL POLE
	TREE LINE
	TREE (SIZE AS NOTED)

REFERENCES:
 1. MAP ENTITLED "CD-9-10-S.E. & AB-9-10-S.E. WATER" PREPARED BY DC WATER, NO PUBLISH DATE.
 2. MAP ENTITLED "CD-9-10-S.E. & AB-9-10-S.E. SEWER" PREPARED BY DC WATER, NO PUBLISH DATE.
 3. MAP ENTITLED "ALTAIACMS LAND TITLE SURVEY, HOWARD ROAD SE, PARTS OF SQUARES 5860, 5861 & 5862, PREPARED BY A. MORTON THOMAS AND ASSOCIATES, INC., DATED APRIL, 2008.



I HEREBY CERTIFY THAT THIS SURVEY HAS BEEN PERFORMED IN THE FIELD UNDER MY SUPERVISION, AND TO THE BEST OF MY KNOWLEDGE, BELIEF, AND INFORMATION, THAT THIS SURVEY HAS BEEN PERFORMED IN ACCORDANCE WITH CURRENTLY ACCEPTED ACCURACY STANDARDS. THAT THE PROPERTY LINES AND RELATIONSHIP OF BUILDINGS AND OTHER STRUCTURES TO THE PROPERTY LINES AND THE LAND INDICATED HEREON IS CORRECT, AND THAT THERE ARE NO ENCROACHMENTS OF BUILDINGS OR STRUCTURES ONTO SAID LAND EXCEPT AS SHOWN.

BOHLER ENGINEERING
 2299 DAVIES DRIVE, SUITE 200
 STERLING, VIRGINIA 20164
 703.706.9500 - 703.709.9501 FAX

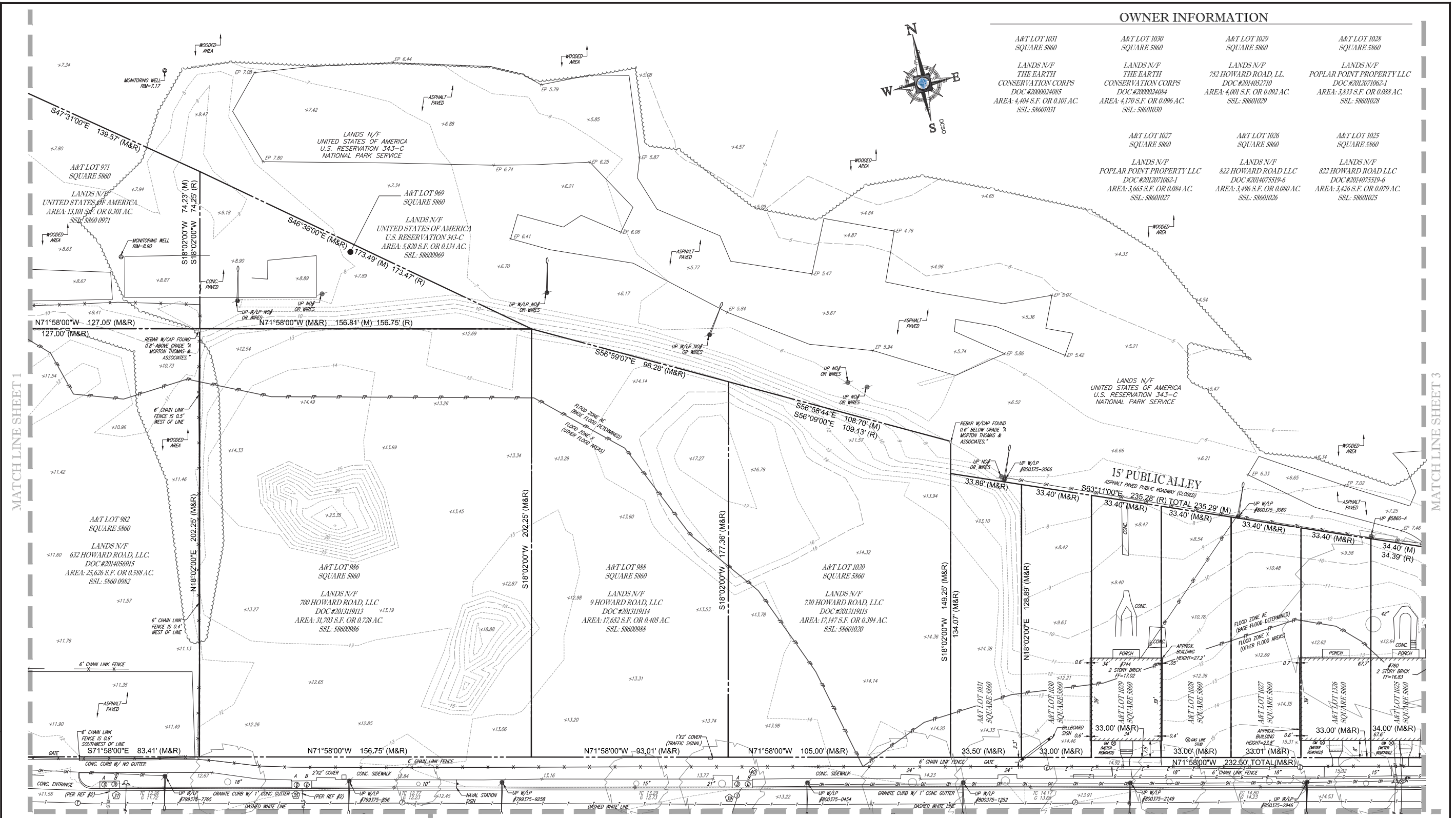
ROBERT C. HARR, JR.
 DISTRICT OF COLUMBIA LICENSED LAND SURVEYOR NO. 906059

DATE: _____

FILE NO. SRW152035
 DATE 06/03/2016
 FIELD DATE 04/27/2016

CREW CHIEF J.W. - S.E.
 DRAWN C.R.
 REVIEWED J.E.B.
 APPROVED J.S.F.
 SCALE 1" = 20'

DWG. NO. 1 of 6



OWNER INFORMATION			
A&T LOT 1031 SQUARE 5860	A&T LOT 1030 SQUARE 5860	A&T LOT 1029 SQUARE 5860	A&T LOT 1028 SQUARE 5860
LANDS N/F THE EARTH CONSERVATION CORPS DOC #2000024085 AREA: 4,404 S.F. OR 0.101 AC. SSL: 58601031	LANDS N/F THE EARTH CONSERVATION CORPS DOC #2000024084 AREA: 4,170 S.F. OR 0.096 AC. SSL: 58601030	LANDS N/F 752 HOWARD ROAD, LL DOC #2014052710 AREA: 4,001 S.F. OR 0.092 AC. SSL: 58601029	LANDS N/F POPLAR POINT PROPERTY LLC DOC #2012071062-1 AREA: 3,833 S.F. OR 0.088 AC. SSL: 58601028
A&T LOT 1027 SQUARE 5860	A&T LOT 1026 SQUARE 5860	A&T LOT 1025 SQUARE 5860	
LANDS N/F POPLAR POINT PROPERTY LLC DOC #2012071062-1 AREA: 3,665 S.F. OR 0.084 AC. SSL: 58601027	LANDS N/F 822 HOWARD ROAD LLC DOC #2014075519-6 AREA: 3,496 S.F. OR 0.080 AC. SSL: 58601026	LANDS N/F 822 HOWARD ROAD LLC DOC #2014075519-6 AREA: 3,426 S.F. OR 0.079 AC. SSL: 58601025	

MATCH LINE SHEET 1

MATCH LINE SHEET 3

MATCH LINE SHEET 6

MATCH LINE SHEET 5

<p>OH ——— OVERHEAD WIRES</p> <p>— — — APPROX. LOC. UNDERGROUND GAS LINE PER UTILITY MARKOUT</p> <p>— — — APPROX. LOC. UNDERGROUND WATER LINE PER UTILITY MARKOUT</p> <p>— — — APPROX. LOC. UNDERGROUND TEL. LINE PER UTILITY MARKOUT</p> <p>— — — APPROX. LOC. UNDERGROUND ELEC. LINE PER UTILITY MARKOUT</p> <p>— — — APPROX. LOC. UNDERGROUND WATER LINE PER REF. #1</p> <p>— — — APPROX. LOC. UNDERGROUND ELEC. LINE PER REF. #3</p> <p>— — — APPROX. LOC. UNDERGROUND SEWER LINE PER REF. #2 & 3</p> <p>— — — APPROX. LOC. UNDERGROUND STORM LINE PER REF. #2 & 3</p> <p>— — — APPROX. LOC. FLOOD PLAIN</p>	<p>123 — — — EXISTING CONTOUR</p> <p>x 123.45 EXISTING SPOT ELEVATION</p> <p>x TC 123.45 EXIST. TOP OF CURB ELEVATION</p> <p>x G 122.95 EXIST. GUTTER ELEVATION</p> <p>UTILITY POLE</p> <p>TRAFFIC SIGNAL</p> <p>MONITORING WELL</p> <p>ELECTRIC METER</p> <p>ELECTRIC BOX</p> <p>SANITARY MANHOLE</p>	<p>⊙ TELEPHONE MANHOLE</p> <p>⊙ ELECTRIC MANHOLE</p> <p>⊙ WATER MANHOLE</p> <p>⊙ STORM DRAIN MANHOLE</p> <p>⊙ WATER METER</p> <p>⊙ GAS METER</p> <p>⊙ SIGN</p> <p>⊙ CLEAN OUT</p> <p>⊙ HYDRANT</p> <p>⊙ WATER VALVE</p> <p>⊙ GAS VALVE</p> <p>⊙ BOLLARD</p> <p>⊙ U-BOLLARD</p> <p>⊙ METAL GUARDRAIL</p> <p>⊙ BENCHMARK</p> <p>⊙ FENCE</p> <p>⊙ L.S.A.</p> <p>⊙ BORING LOCATION</p> <p>⊙ AREA LIGHT</p> <p>⊙ PAINTED ARROWS</p> <p>⊙ STORM & SANITARY STRUCTURE ID NUMBER</p>	<p>— — — UTILITY POLE/LIGHT POLE</p> <p>— — — GUY WIRE</p> <p>— — — TRAFFIC SIGNAL POLE</p> <p>— — — TREE LINE</p> <p>— — — TREE (SIZE AS NOTED)</p>
---	--	--	--

KEY MAP

SCALE: 1" = 400'

0 5 10 20
feet

BOUNDARY & TOPOGRAPHIC SURVEY

REDBRICK - POPLAR SQUARE

A&T LOTS 937, 969, 971, 982, 986, 988, 1020, 1025-1031, 10368 1037 SQUARE 5860
A&T LOTS 951 & 957 SQUARE 5861, LOTS 79, 82-86 SQUARE 5861
631-821 600-692 HOWARD ROAD, S.E.
WASHINGTON, DISTRICT OF COLUMBIA

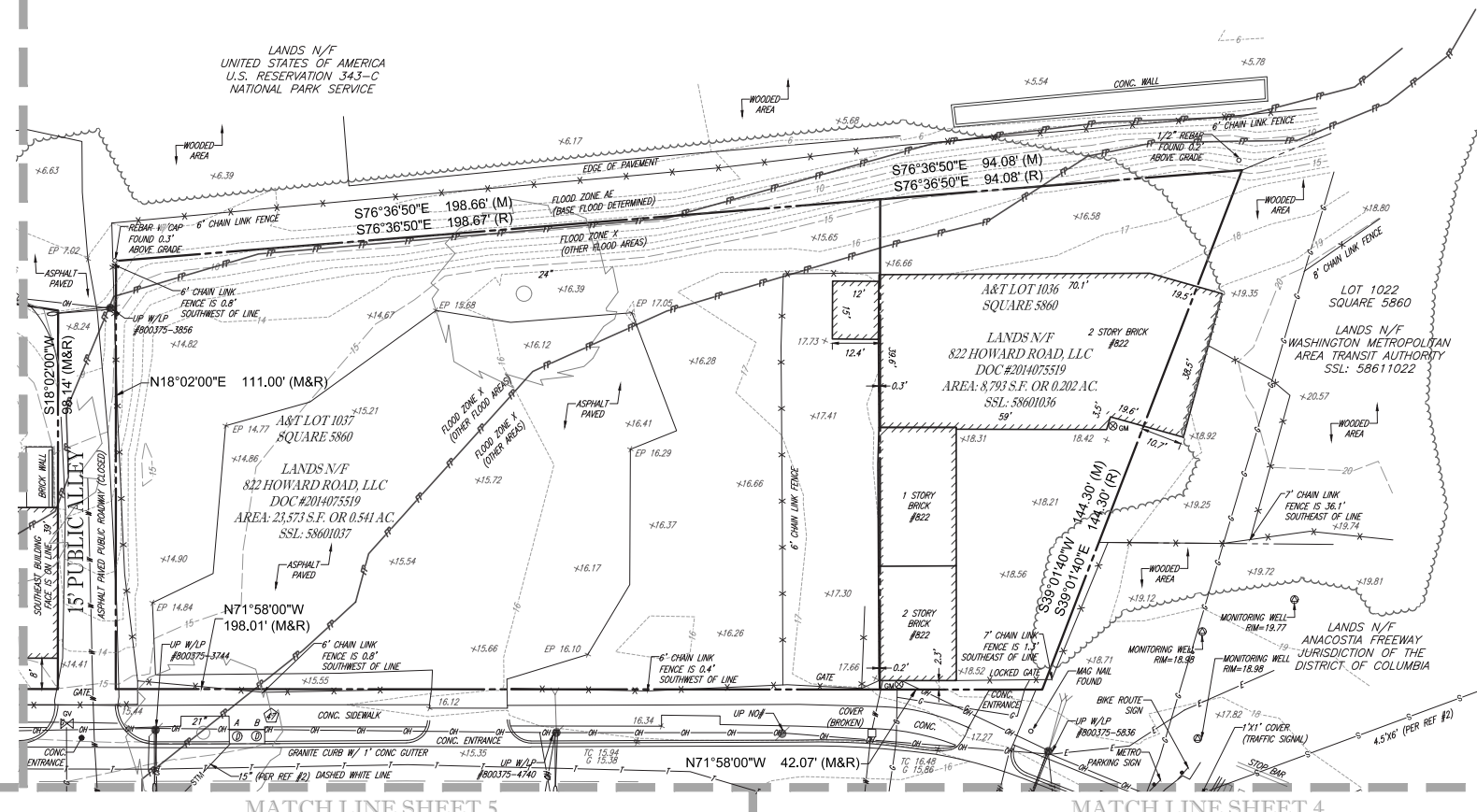
FILE NO. SRW152035	DATE 06/03/2016	FIELD DATE 04/27/2016	CREW CHIEF J.W. - S.E.	DRAWN C.R.	REVIEWED J.E.B.	APPROVED J.S.F.	SCALE 1" = 20'	DWG. NO. 2 OF 6
-----------------------	--------------------	--------------------------	---------------------------	---------------	--------------------	--------------------	-------------------	--------------------



MATCH LINE SHEET 2

LANDS N/F
UNITED STATES OF AMERICA
U.S. RESERVATION 343-C
NATIONAL PARK SERVICE

LANDS N/F
UNITED STATES OF AMERICA
U.S. RESERVATION 343-C
NATIONAL PARK SERVICE

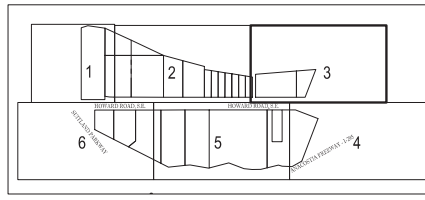


MATCH LINE SHEET 5

MATCH LINE SHEET 4

LEGEND

OH	OVERHEAD WIRES	123	EXISTING CONTOUR	①	TELEPHONE MANHOLE	•	BOLLARD	→	UTILITY POLE/LIGHT POLE
-x-	APPROX. LOC. UNDERGROUND GAS LINE PER UTILITY MARKOUT	x 123.45	EXISTING SPOT ELEVATION	②	ELECTRIC MANHOLE	•	U-BOLLARD	→	GUY WIRE
-w-	APPROX. LOC. UNDERGROUND WATER LINE PER UTILITY MARKOUT	x TC 123.45	EXIST. TOP OF CURB ELEVATION	③	WATER MANHOLE	•	- -	→	TRAFFIC SIGNAL POLE
-u-	APPROX. LOC. UNDERGROUND TEL. LINE PER UTILITY MARKOUT	x G 122.85	EXIST. GUTTER ELEVATION	④	STORM DRAIN MANHOLE	•	- - - -	→	TREE LINE
-e-	APPROX. LOC. UNDERGROUND ELEC. LINE PER UTILITY MARKOUT			⑤	WATER METER	•	•	→	TREE (SIZE AS NOTED)
-w1-	APPROX. LOC. UNDERGROUND WATER LINE PER REF. #1			⑥	GAS METER	•	-x-		
-w2-	APPROX. LOC. UNDERGROUND ELEC. LINE PER REF. #1			⑦	SIGN	•	L.S.A.		
-s1-	APPROX. LOC. UNDERGROUND SEWER LINE PER REF. #2 & 3			⑧	CLEAN OUT	•	F-29		
-s2-	APPROX. LOC. UNDERGROUND STORM LINE PER REF. #2 & 3			⑨	HYDRANT	•	EL29-28.50		
-f-	APPROX. LOC. FLOOD PLAIN			⑩	WATER VALVE	•	•		
-s-				⑪	GAS VALVE	•	→		
-p-				⑫	SANITARY MANHOLE	•	→		
				⑬		•	→		
				⑭		•	→		
				⑮		•	→		



KEY MAP
SCALE: 1" = 400'

ROBERT C. HARR, JR.
DISTRICT OF COLUMBIA LICENSED LAND SURVEYOR NO. 906059

BOUNDARY & TOPOGRAPHIC SURVEY

REDBRICK - POPLAR POINT

A&T LOTS 937, 969, 971, 982, 986, 988, 1020, 1025-1031, 1036& 1037 SQUARE 5860
A&T LOTS 951 & 957 SQUARE 5861, LOTS 79, 82-86 SQUARE 5861
631-821 600-692 HOWARD ROAD, S.E.
WASHINGTON, DISTRICT OF COLUMBIA

FILE NO.
SRW152035

DATE
06/03/2016

FIELD DATE
04/27/2016

CREW CHIEF
J.W. - S.E.

DRAWN
C.R.

REVIEWED
J.E.B.

APPROVED
J.S.F.

SCALE
1" = 20'

DATE
2039 DAVIES DRIVE, SUITE 209
STERLING, VIRGINIA 20164
703.708.9500 • 703.709.9501 FAX
www.bohler-engineering.com

BOHLER
ENGINEERING

DWG. NO.
3 of 6